

AGRICULTURAL OFFICE BHANDARA

DISTT.: -BHANDARA (M.S.)

NAME OF WORK :-

PROPOSED ESTIMATE FOR CONSTRUCTION OF INTIGRATED PACKHOUSE IN PREMICES OF BTB KISSAN PRODUCER COMPANY LTD. BHANDARA AT SHAHAPUR ,TAH & DIST-BHANDARA.

ESTIMATED COST :- RS.45,80,813/-

ESTIMATE

Name of Work : Proposed Estimate for Construction of Integrated
Packhouse In Premises Of BTB Producer Company
Ltd. Bhandara at Shahapur , Tah & Dist-Bhandara.

DIVISION :

Sanction Estimate No.

Fund Head :

Major Head :

Minor Head :

Service Head :

Department Head :

Estimate framed in the Office of the Sub-division Bhandara , P.W.D.
Z.P. Division Bhandara of the probable expenses that will be incurred of the Work -
Construction of Shed

Amount Rs.45,80,813/-

Administratively Approved

No. _____ Date:- _____

Technically Sanctioned

No. _____ Date:- _____

Estimate Prepared by :-

Estimate Checked by :-
(Call or Authority)

(GENERAL DISCRPTION)
Separately attached.

GENERAL REPORT & SPECIFICATION

- 1. Name of Work** : Proposed Estimate for Construction of Integrated Packhouse In Premises Of BTB Kissan Producer Company Ltd. Bhandara at Shahapur ,Tah & Dist-Bhandara.
- 2. Amount of Estimate** : **Rs. 45,80,813/-**
- 3. Authority** : This Work is Proposed under National Food Security Yojana. Member of Agricultural Office is Decided to Construct the Shed.
- 4. Necessity** :
- 5. Provision** : The following provision made in this estimate.
1. Excavation , 80 mm Boulder layer Soiling, P.C.C. 1:3:6
2. Foundation , Column , beam , Slab etc
3. HYSD Steel Reinforcement
- 6. Rates & Specification** :The rates adopted in the Estimate are as per State Schedule Rate for 2022-2023 w.e.f. 01/07/2022 of Maharashtra State. The work will be carried out as per standard specification laid down in red book and instruction's by Engineer-In-Charge time to time.

GENERAL ABSTRACT

Name of Work :-

**Proposed Estimate for Construction of Integrated Packhouse In Premises Of BTB Kissan
Producer Company Ltd. Bhandara at Shahapur, Tah & Dist-Bhandara.**

Sr.No	Particulars	Amount
1	Amount as per Detail Abstract	3618446.00
2	Vigilance & Quality Control Test For Work as per Frequency	20700.00
3	Total Charges of Royalty	18477.00
4	Electrification Work	191800.00
		3849423.00
5	Add 1% Insurance	38494.00
6	Add 18% GST	692896.00
	Total	4,580,813.00
	SAY RS.	45,80,813/-

Consultant Engineer

Name of Work :-

Proposed Estimate for Construction of Integrated Packhouse In Premises Of BTB Kissan Producer Company Ltd. Bhandara at Shahapur, Tah & Dist-Bhandara.

ABSTRACT

Sr. No.	Description of items	Qty.	Rate	Unit	Amount
1	2	3	4	5	6
1	Excavation for foundation in earth, soil of all types, sand, gravel and soft murum, including removing the excavated material up to a distance of 50 m. beyond the building area and stacking and spreading as directed, dewatering, preparing the bed for the foundation and necessary back filling, ramming, watering including shoring and strutting etc. complete. (Lift upto 1.5 m.) SSR It. No. 21.02 Pg. No. 115 A) lift upto 1.50 mt. A) lift above 1.50 mt.to 3.00 mtr	38.88 15.55	207.00 258.00	Cum. Cum.	8048.00 4012.00
2	Providing and filling in the foundation with sand of approved quality including watering, compacting etc. complete. (To be executed with prior approval of Superintending Engineer) SSR It. No. 21.39 Pg. No. 118	105.30	2719.45	Cum.	286358.00
3	Providing soling using 80 mm size trap metal in 15 cm. layer including filling voids with Crushed sand/grit, ramming, watering etc. complete. SSR It. No. 21.40 Pg. No. 118	28.19	2535.00	Cum.	71457.00
4	Providing and laying in situ cement concrete of M10 proportion with trap/ granite/ quartzite/ gneiss metal in foundation including necessary form work, compacting and curing etc. complete. (with reversible drum rtype mixer with SCADA with SSR It. No. 24.01 Pg. No. 131	18.79	7097.35	Cum.	133373.00
5	Providing and laying in situ cement concrete M-20 of trap / granite /quartzite/ gneiss metal for R.C.C. work in foundations like raft, strip foundations, grillage and footings of R.C.C. columns and steel stanchions etc. including bailing out water, formwork ,cover blocks compaction and curing roughening the surface if special finish is to be provided (Excluding reinforcement and structural steel) etc. complete, with fully automatic micro processor based PLC with SCADA enabled concrete batch mix plant (pan Item No. 25.13- Pg. No. 138	5.40	8320.15	Cum.	44929.00

6	<p>Providing and laying Cast in situ/Ready Mix cement concrete M-15 of trap/ granite/quartzite/gneiss metal for coping to plinth or parapet, moulded or chamfered as per drawing or as directed including steel centering, plywood/ steel formwork compacting, roughening them if special finish is to be provided, finishing uneven and honeycombed surface and curing etc. complete. The Cement Mortar 1:3 plaster is considered for rendering uneven and honeycombed surface only. Newly laid concrete shall be covered by gunny bag, plastic, tarpaulin</p> <p>SSR It. No. 24.16 Pg. No. 180</p>	17.46	8406.15	Cum.	146798.00
7	<p>Providing and laying Cast in situ/Ready Mix cement concrete M-20 of trap / granite /quartzite/ gneiss metal for R.C.C. columns as per detailed designs and drawing or as directed including centering, formwork, cover blocks, laying/pumping, compaction finishing the formed surfaces with cement mortar 1:3 of sufficient minimum thickness to give a smooth and even surface or roughening if special finish is to be provided and curing etc. complete, (Excluding reinforcement and structural steel). with fully automatic micro processor based PLC with SCADA enabled reversible Drum Type mixer/ concrete Batch mix plant (Pan mixer) etc. complete. With natural</p> <p>item No. 25.31 pg No. 134</p>	5.21	14999.15	Cum.	78124.00
8	<p>Providing and laying Cast in situ/Ready Mix cement concrete M-20 of trap / granite /quartzite/ gneiss metal for R.C.C. beam sand lintels as per detailed designs and drawings or as directed including centering, formwork, cover blocks, laying/pumping, compaction and roughening the surface if special finish is to be provided and curing etc. complete. (Excluding reinforcement and structural steel). with fully automatic micro processor based PLC with SCADA enabled reversible Drum Type mixer/ concrete Batch mix plant (Pan mixer) etc. complete. With natural sand/V S I quality Artificial Sand</p> <p>item No. 25.50 pg No. 135</p>	6.58	13485.15	Cum.	88767.00

9	<p>Providing and laying Cast in situ/Ready Mix cement concrete M-20 of trap/ granite / quartzite/ gneiss metal for R.C.C. slabs and landings as per detailed designs and drawings including centering, formwork, cover blocks, laying/pumping, compaction/finishing the formed surfaces with cement mortar 1:3 of sufficient minimum thickness to give a smooth and even surface or roughening if special finish is to be provided and curing etc. complete,(Excluding reinforcement and structural steel).with fully automatic micro processor based PLC with SCADA enabled reversible Drum Type mixer/ concrete Batch mix plant (Pan mixer) etc. complete. With natural sand/V.S.I.</p> <p>quality Artificial Sand item No. 25.70 pg No. 135</p>	11.63	15159.15	Cum.	176316.00
10	<p>Providing and fixing in position TMT - FE - 500 bar reinforcement of various diameters for R.C.C. pile caps, footings, foundations, slabs, beams columns, canopies, staircase, newels, chajjas, lintels pardis, copings, fins, arches etc. as per detailed designs, drawings and schedules. including cutting, bending, hooking the bars, binding with wires or tack welding and supporting as</p> <p>item No. 26.33 pg No. 139</p>	3.47	89823.00	M.T.	311818.00
11	<p>Providing second class Burnt Brick masonry with conventional/I.S. type bricks in cement mortar 1:6 in foundations and plinth of inner walls/ in plinth external walls including bailing out water manually , striking joints on unexposed faces, raking out joints on exposed faces and watering etc. Complete.</p> <p>item No. 27.01 pg No. 144</p>	7.45	8462.05	Cum.	63059.00
12	<p>Providing second class Burnt Brick masonry with conventional/I.S. type bricks in cement mortar 1:6 in superstructure including striking joints, raking out joints, watering and scaffolding etc. Complete</p> <p>item No. 27.05 pg No. 144</p>	32.61	8701.05	Cum.	283736.00
13	<p>Providing internal cement plaster 20mm thick in two coats in cement mortar 1:5 without neeru finish, to concrete, brick surface, in all positions including scaffolding and curing etc. complete</p> <p>SSR It. No. 32.06 Pg. No.153</p>	478.86	389.85	Sqm.	186684.00
14	<p>Providing and applying two coats of exterior acrylic emulsion paint conforming to corresponding I.S. of approved manufacture and of approved colour to the plastered surfaces including cleaning ,preparing the plaster surface, applying primer coat ,scaffolding if necessary , and watering the surface for two days</p>				

	SSR It. No. 35.25 Pg. No.165	478.86	240.00	Sqm.	114926.00
15	Providing structural steel work in hollow section of various thickness and sizes in square, rectangular and round shape from 25mm to 450mm section as per IS 4923 YST 310 Grade produced from iron ore and blast furnace route etc. as per detailed designs and drawing or as directed including cutting, fabricating, hoisting, erecting, fixing in position, making riveted/bolted/ welded connections and painting complete. Item No. 23.12- Pg. No.130	8.10	118910.00	MT	963171.00
16	Providing and fixing colour coated Zinalume (R) AZ150 (min 150 gms/sq.mt. total on each side) profiled sheets for roofing. The feed material is manufactured out of nominal 0.45 mm Base Metal Thickness (BMT) (0.5 mm TCT), Hi-strength steel with min.550 MPa yield strength, metallic hot dip coated with Aluminium-Zinc alloy (55% aluminium Item No. 38.34- Pg. No. 173	411.53	1293.00	Sqm	532107.00
17	Providing and fixing of colour coated Zinaluminium(R) AZ150 (min 150 gms/sq.mt. total on each side) profiled sheets for roofing. The feed material is manufactured out of nominal 0.45 mm Base Metal Thickness (BMT) (0.5 mm TCT), Hi-strength steel with min.550 MPa yield strength, metallic hot dip coated withAluminium-Zinc alloy (55% aluminium 43.4% zinc 1.6% silicon) with COLORBOND (R) steel quality super durable polyster paint coat (with inorganic pigment). The Item No. 38.35- Pg. No. 174	29.86	871.00	Rmt	26008.00
18	Providing and fixing rolling shutter fabricated from steel laths of minimum thickness 0.9 mm with lock plate of 3.15 mm thickness reinforced with 35 x 35 x 5 mm angle section fitted with sliding bolts and handles for both sides, deep M.S. channel section of depth and thickness not less than 65 mm and 3.15 mm respectively with hold fast arrangements, M.S. Bracket plate 300 x 300 x 3.15 mm minimum size and shape with square bar, suspension shaft of minimum 32 mm diameter, hood cover of M.S. sheet Item No. 39.25- Pg. No. 308	18.61	5308.00	Sqm	98755.00
			Total		3618446.00

Consultant Engineer

Estimate Sheet

Name Of Work :- Providing Internal Electrification at Integrated Packhouse In Premises Of BTB Kissan Producer Company Ltd.Bhandara at Shahapur ,Tah & Dist-Bhandara.

Sr.No	C-S-R	Item Description	Rate	Unit	Qty	Amount
1	1-1-9	Supplying and erecting HMS PVC conduit FRLS grade 25 mm dia. With necessary accessories in wall/floor with chiselling appropriately as per	127.00	m	180	22860.00
2	1-3-1	Supplying and erecting mains with 2x1.5 sq.mm FRLSH copper PVC insulated wire laid in provided conduit/trunking/inside pole/Bus	40.00	m	280	11200.00
3	1-3-2	Supplying and erecting mains with 2x2.5 sq.mm FRLSH copper PVC insulated wire laid in provided conduit/trunking/inside pole/Bus	62.00	m	180	11160.00
4	1-3-3	Supplying and erecting mains with 2x4 sq.mm FRLSH copper PVC insulated wire laid in provided conduit/trunking/inside pole/Bus bars	89.00	m	150	13350.00
5	1-5-7	Supplying and erecting Ceiling rose / Batten holder / Slanting holder / hanging cord switch / hanging bell push / pendant holder bakelite	39.00	each	25	975.00
6	1-6-1	Supplying and erecting modular type switch 6A / 10A duly erected on provided plate and box with wiring connections complete.	72.00	each	25	1800.00
7	1-6-2	Supplying and erecting modular type switch 16A duly erected on provided plate and box with wiring connections complete.	106.00	each	5	530.00
8	1-6-10	Supplying and erecting modular type 3 pin 6A multi socket with safety shutter, duly erected on provided plate and box with wiring	112.00	each	10	1120.00
9	1-6-11	Supplying and erecting modular type 3 pin 6 / 16A multi socket with safety shutter, duly erected on provided plate and box with wiring	160.00	each	5	800.00
10	1-6-32	Supplying and erecting PVC Surface modular switch box with double mounting plate for 12 module duly erected.	343.00	each	5	1715.00
11	1-7-3	Point wiring for light/fan/bell in 20 mm FRLS grade HMS PVC conduit with 1.5 sq.mm (2+1E) FRLSH grade copper wire with flush	494.00	each	30	14820.00
12	2-4-4	Supplying and erecting integrated LED street light fitting 40 to 50W IP65 & IK08 class having single piece pressure die-cast	4117.00	each	6	24702.00
13	2-4-15	Supplying and erecting integrated LED flood light fitting Max. 100W IP65 & IK07 class having pressure die-cast aluminium housing,	8246.00	each	8	65968.00
14	2-7-4	Supplying and erecting street light Wall bracket made from 40 mm. dia ' G.I. pipe 1.2 m. in total length complete as per specification	822.00	each	6	4932.00

15	2-10-3	Supplying and erecting regular/ standard model ceiling fan of 1400mm. Sweep complete erected in position as per specification no. FG-	2275.00	each	9	20475.00
16	2-11-9	Supplying and erecting electronic type step regulator for ceiling fan 600/ 900/ 1200/ 1400 mm. sweep, complete erected on provided	206.00	each	9	1854.00
17	5-1-18	Supplying and erecting switch disconnecter fuse (SDF) switch 415V, 100A, open execution, four pole AC23 A rated with terminal shrouds on both sides and phase barriers along with telescopic shaft for depth adjustments and door interlock and padlock complying to IS/IEC 60947-3 Part-1/3 HRC - DIN type fuse, insulation voltage 1000 V for enclosing in panel with rotary handle for ON /	4635.00	each	1	4635.00
18	5-3-3	Supplying, erecting & marking SPMCB 6A to 32A, B-series with rated short - circuit breaking capacity (Icn) 10kA in provided	173.00	each	12	2076.00
19	5-3-20	Supplying, erecting and marking four pole isolators only switch version of miniature circuit breakers of 80/100A in provided distribution board.	916.00	each	1	916.00
20	5-4-1	Supplying & erecting triple pole and neutral distribution board (TPNDB), SPMCB of 4 ways/phase (12 poles), with door, 1.2mm thickness, surface/flush mounted, IP 43 protection on iron/GI frame (horizontal busbar type) as per specification no. SW-	2356.00	each	1	2356.00
	5-4-12	Supplying & erecting CRCA sheet metal enclosures of 1.2mm thickness with 30 A, 3 pin plug & earth socket and 30A, 3 pin plug top with 30A triple pole MCB having rated short - circuit breaking capacity (Icn) 10kA complete	1816.00	each	3	5448.00
21	5-10-18	Supplying & erecting HRC fuse cartridge 415V, 100A	242.00	each	4	968.00
TOTAL AMOUNT						191800.00

Name of Work :-

Proposed Estimate for Construction of Integrated Packhouse In Premises Of BTB Kissan Producer Company Ltd. Bhandara at Shahapur ,Tah & Dist-Bhandara.

MEASUREMENT

Sr. No.	Item	Nos.	Measurement			Quantity	unit
			Length	Breadth	Height		
1	Excavation for foundation in earth, soils of all types, sand, gravel and soft murum, Lift Upto 1.50 m	18	1.20	1.20	1.50	38.88	Cum
		18	1.20	1.20	0.60	15.55	Cum
2	Providing & filling in the foundation with sand of approved quality included	1	18.00	9.00	0.65	105.30	Cum
3	Providing soiling 80mm size of trap/ granite/ quartzite----- etc. comp.	18	1.20	1.20	0.15	3.89	
		1	18.00	9.00	0.15	24.30	
					Total	28.19	Cum
4	Providing & laying in situ-C.C.1:3:6 M-10 for foundation & bedding comp.	18	1.20	1.20	0.10	2.59	
		1	18.00	9.00	0.10	16.20	
					Total	18.79	Cum
5	Providing and laying in situ cement concrete of required grade of trap / granite/ quartzite / gneiss metal for R.C.C. work in foundations like raft, grillages, strip foundations	18	1.00	1.00	0.30	5.40	Cum
6	Providing and laying in situ C. C. M-15 of coping to plinth or parapet , moulded as directed ----- etc. complete.	1	18.46	9.46	0.10	17.46	Cum
7	Providing and laying in situ C. C. M-20 M-20 of trap granitequartzite / gneiss metals for cement R. C. C.column as per detailed design and drawing or	18	0.23	0.23	5.47	5.21	
					Total	5.21	Cum

8	Providing and laying in situ C. C. M-20 quartzite / gneiss metals for R.C.C. beams ----- etc. comp. Plinth Beam	2	18.00	0.23	0.30	2.48		
		2	9.00	0.23	0.30	1.24		
		2	18.00	0.23	0.23	1.90		
		2	9.00	0.23	0.23	0.95		
						Total	6.58	Cum
9	Providing and laying in situ C. C. M-20 quartzite / gneiss metals for R.C.C. Slab & landing ----- etc. comp. Plinth Protection Slab	2	18.00	1.50	0.13	7.02		
		2	9.00	1.50	0.13	3.51		
		2	3.67	1.50	0.10	1.10		
						Total	11.63	Cum
10	Providing and fixing in position mild steel / T.M.T. bar reinforcement of various diameters for R.C.C. piles	5.40		80.00		432.00		
		17.46		60.00		1047.79		
		5.21		90.00		468.77		
		6.58		90.00		592.43		
		11.63		80.00		930.48		
							3471.47	
					3.47	MT		
11	Providing second class burnt brick masonry in Cement mortar 1:6 for substructure ----- etc. complete.	2	9.00	0.23	0.60	2.48		
		2	18.00	0.23	0.60	4.97		
						Total	7.45	Cum
12	Providing second class burnt brick masonry in Cement mortar 1:6 for superstructure ----- etc. complete.	2	9.00	0.23	3.00	12.42		
		2	18.00	0.23	3.00	24.84		
		Ded	2	3.37	0.23	3.00	-4.65	
						Total	32.61	Cum
13	Providing internal cement plaster 20mm thick in asingle coat -- etc. comp.	Wall	4	9.00	--	4.23	152.28	
			4	18.00	--	4.23	304.56	
			4	3.67		1.50	22.02	
		Ded	2	3.37		3.00	-20.22	
						Total	478.86	Sq.m.

14	Providing and applying two coats of exterior acryallic emulsion paint confirming to corresponding I.S. of approved manufacture and of approved colour to the plastered surfaces including cleaning ,preparing						
		Same as quantity item No. 13			478.86	Sq.m.	
15	Providing structural steel work in hollow section of various thickness and sizes in square, rectanular and round shape from 25mm to 450mm section as per IS 4923 YST 310 Grade produced from iron ore and blast Item No. 23.12- Pg. No.225 carpet area 18 x 9 = 162.00 Sqm	1	162.00	50.00	8100	8.10	MT
16	Providing and fixing colour coated Zinalume (R) AZ150 (min 150 gms/sq.mt. total on each side) profiled sheets for roofing. The feed material is manufactured out of Item No. 38.34- Pg. No. 302	2	22.26	--	5.91	263.11	
		2	20.46	--	2.40	98.21	
		2	10.46	--	2.40	50.21	
					Total	411.53	Sq.m.
17	Providing and fixing of colour coated Zinaluminium(R) AZ150 (min 150 gms/sq.mt. total on each side) profiled sheets for roofing. The feed material is manufactured out of Item No. 38.34- Pg. No. 302	1	20.26	--		20.26	
		4	2.40	--		9.60	
					Total	29.86	Rmt
18	Providing and fixing rolling shutter fabricated from steel laths of minimum thickness 0.9 mm with lock plate of 3.15 mm thickness reinforced with 35 x 35 x 5 mm angle section fitted with sliding bolts and handles Item No. 39.25- Pg. No. 308 R.S.	2	3.05	--	3.05	18.61	
					Total	18.61	Sqm

Consultant Engineer

RATE ANALYSIS			
1	Excavation for foundation in earth, soil of all types, sand, gravel and soft murum, including removing the excavated material up to a distance of 50 m. beyond the building area and stacking and spreading as directed, dewatering, preparing the bed for the foundation and necessary back filling, ramming, water ing including shor ing and st rut t ing etc. complete. (Lift upto 1.5 m.) SSR It. No. 21.02 Pg. No. 189 Basic Rate	207.00	
	Adopted Rate Rs. -----	207.00	cum
	Lift above 1.50m to 3.00 mtr item No.21.04 Basic Rate	258.00	
	Adopted Rate Rs. -----	258.00	cum
2	Providing and filling in the foundation with sand of approved quality including watering, compacting etc. complete. (To be executed with prior approval of Superintending Engineer) SSR It. No. 21.39 Pg. No. 194 Basic Rate Add lead of Sand 24 Kmt. @ Rs. 559.43 x 1.00M3 Total	2160.00 559.43 2719.43	
	Adopted Rate	2719.45	Cum.
3	Providing soling using 80 mm size trap metal in 15 cm. layer including filling voids with Crushed sand/grit, ramming, watering etc. complete. SSR It. No. 21.40 Pg. No. 194 Basic Rate Add lead of Boulder 63 Kmt. @ Rs.997.10 x 1.00 M3 Add lead of Sand 24 Kmt. @ Rs. 559.43 x 0.15 M3 Total	1454.00 997.10 83.91 2535.01	
	Adopted Rate	2535.00	Cum.
4	Providing and laying Cast in situ/Ready Mix cement concrete in M-10 of trap/ granite/ quartzite/ gneiss metal for foundation and bedding including bailing out water, Steel centering,formwork, SSR It. No. 24.01 Pg. No. 215 Basic Rate Add carting of 40 mm metal 0.70 cum @ 1040.45 Add carting of 20 mm & 12/10mm metal 0.20 cum @ 1040.45 Add carting of Sand 0.47 cum @ 559.43 Add carting of Cement 4.40 Bag @6.00 Rate Proposed Rs. -----	5830.00 728.32 249.71 262.93 26.40 7097.36	
	Adopted Rate Rs. -----	7097.35	Cum

5	Providing and laying in situ /Ready Mix cement concrete M-20 of trap / granite /quartzite/ gneiss metal for R.C.C. work in foundations like raft, strip foundations, grillage and footings of R.C.C. columns and steel stanchions etc. including bailing out water, Steel centering formwork, laying/pumping cover blocks, compaction and curing item No. 25.11 pg No. 219 Basic Rate Add carting of 20 mm & 12/10mm metal 0.90 cum @ 1040.45 Add carting of Sand 0.425 cum @ 559.43 Add carting of Cement 7.00 Bag @ 6.00		
			7104.00
			936.41
			237.76
			42.00
	Total	8320.16	
Adopted Rate		8320.15	Cum.
6	Providing and laying Cast in situ/Ready Mix cement concrete in M-20 of trap/ granite/ quartzite/ gneiss metal for R.C.C.coping to plinth or parapet and sill of doors and windows moulded as per detailed drawings or chamfered as approved by the Engineer including centering, formwork, cover blocks, laying/pumping, compacting , curing , finishing and roughening them if special finish is to be item No. 26.23 pg No. 229 Basic Rate Add carting of 20 mm & 12/10mm metal 0.90 cum @ 1040.45 Add carting of Sand 0.425 cum @ 559.43 Add carting of Cement 7.00 Bag @ 6.00		
			7190.00
			936.41
			237.76
			42.00
	Total	8406.16	
Adopted Rate		8406.15	Cum.
7	Providing and laying Cast in situ/Ready Mix cement concrete M-20 of trap / granite /quartzite/ gneiss metal for R.C.C. columns as per detailed designs and drawing or as directed including steel centering, formwork, cover blocks, laying/pumping, compaction finishing the formed surfaces with cement mortar 1:3 of sufficient minimum thickness to give a smooth and even surface or roughening if special finish is to be provided and curing etc. complete,(Excluding SSR It. No. 25.31 Pg. No. 221 Basic Rate Add carting of 20 mm & 12/10mm metal 0.90 cum @ 1040.45 Add carting of Sand 0.425 cum @ 559.43 Add carting of Cement 7.00 Bag @ 6.00 Rate Proposed Rs. -----		
			13783.00
			936.41
			237.76
			42.00
		14999.16	
Adopted Rate Rs. -----		14999.15	Cum

8	<p>Providing and laying Cast in situ/Ready Mix cement concrete M-20 of trap / granite /quartzite/ gneiss metal for R.C.C. beams and lintels as per detailed designs and drawings or as directed including steel centering, formwork, cover blocks, laying/pumping, compactionand roughening the surface if special finish is to be provided and curing etc. complete.</p> <p>SSR It. No. 25.50 Pg. No. 223</p> <p>Basic Rate</p> <p>Add carting of 20 mm & 12/10mm metal 0.90 cum @ 1040.45</p> <p>Add carting of Sand 0.425 cum @ 559.43</p> <p>Add carting of Cement 7.00 Bag @ 6.00</p> <p>Rate Proposed Rs. -----</p>	<p>12269.00</p> <p>936.41</p> <p>237.76</p> <p>42.00</p> <p>13485.16</p>	
	Adopted Rate Rs. -----	13485.15	Cum
9	<p>Providing and laying Cast in situ/Ready Mix cement concrete M-20 of trap/ granite / quartzite/ gneiss metal for R.C.C. slabs and landings as per detailed designs and drawings including</p> <p>SSR Item No. 25.70- Pg. No. 135</p> <p>Basic Rate</p> <p>Add carting of 20 mm & 12/10mm metal 0.90 cum @ 1040.45</p> <p>Add carting of Sand 0.425 cum @ 559.43</p> <p>Add carting of Cement 7.00 Bag @ 6.00</p> <p>Rate Proposed Rs. -----</p>	<p>13943.00</p> <p>936.41</p> <p>237.76</p> <p>42.00</p> <p>15159.16</p>	
	Adopted Rate Rs. -----	15159.15	Cum
10	<p>Providing and fixing in position TMT - FE - 500 bar reinforcement of various diameters for R.C.C. pile caps, footings, foundations,slabs, beams columns, canopies, staircase, newels, chajjas,lintels pardis, copings, fins, arches etc. as per detailed designs,drawings and</p> <p>SSR Item No. 26.33 Pg. No. 233</p> <p>Basic Rate</p> <p>Add lead of Steel 2.00 Kmt. @ Rs.120.00x 1 MT</p> <p style="text-align: right;">Total</p>	<p>89703.00</p> <p>120.00</p> <p>89823.00</p>	
	Adopted Rate	89823.00	MT
11	<p>Providing second class Burnt Brick masonry with conventional/I.S. type bricks in cement mortar 1:6 in substructure including striking joints, raking out joints, watering</p> <p>sr.no. 1046 ,Item No. 27.01- Pg. No. 242</p> <p>Basic Rate</p> <p>Add lead of Brick 18 Kmt. @ Rs. 518.56</p> <p>Add lead of Sand 24 Kmt. @ Rs.559.43 x 0.32 M3</p> <p>Add lead of Cement 1.00 Kmt. @ Rs.6.00 x 1.58Bags.</p> <p style="text-align: right;">Total</p>	<p>7755.00</p> <p>518.56</p> <p>179.02</p> <p>9.48</p> <p>8462.06</p>	
	Adopted Rate	8462.05	Cum

12	<p>Providing second class Burnt Brick masonry with conventional/I.S. type bricks in cement mortar 1:6 in superstructure including striking joints, raking out joints, watering and scaffolding etc. Complete</p> <p>sr.no. 1046 ,Item No. 27.05- Pg. No. 242</p> <p>Basic Rate</p> <p>Add lead of Brick 18 Kmt. @ Rs. 518.56</p> <p>Add lead of Sand 24 Kmt. @ Rs.559.43 x 0.32 M3</p> <p>Add lead of Cement 1.00 Kmt. @ Rs.6.00 x 1.58Bags.</p>	<p>7994.00</p> <p>518.56</p> <p>179.02</p> <p>9.48</p>	
Total		8701.06	
Adopted Rate		8701.05	Cum
13	<p>Providing internal cement plaster 20mm thick in Single coats in cement mortar 1:5 without neeru finish, to concrete, brick surface, in all positions including scaffolding and curing etc. complete</p> <p>SSR It. No. 32.06 Pg. No.256</p> <p>Basic Rate</p> <p>Add lead of Sand 24 Kmt. @ Rs. 559.43 x 0.025 M3</p> <p>Add lead of Cement 1.00 Kmt. @ Rs.6.00 x 0.14 Bags.</p>	<p>375.00</p> <p>13.99</p> <p>0.84</p>	
Total		389.83	
Adopted Rate		389.85	Sqm
14	<p>Providing and applying two coats of exterior acraylic emulsion paint confirming to corresponding I.S. of approved manufacture and of approved colour to the plastered surfaces including cleaning ,preparing the plaster surface, applying primer</p> <p>Item No. 35.25 Pg. No. 277</p> <p>Basic Rate</p>	<p>261.00</p>	
Adopted Rate		240.00	Sqm
15	<p>Providing structural steel work in hollow section of various thickness and sizes in square, rectanular and round shape from 25mm to 450mm section as per IS 4923 YST 310 Grade produced from iron ore and blast furnace route etc. as per detailed designs and drawing or as directed including cutting,</p> <p>Item No. 23.12- Pg. No.214</p> <p>Basic Rate</p> <p>Add lead of Steel 2.00 Kmt. @ Rs.120.00x 1 MT</p>	<p>118790.00</p> <p>120.00</p>	
Total		118910.00	
Adopted Rate		118910.00	MT

16	Providing and fixing colour coated Zinalume (R) AZ150 (min 150 gms/sq.mt. total on each side) profiled sheets for roofing. The feed material is manufactured out of nominal 0.45 mm Base Metal Thickness (BMT) (0.5 mm TCT), Hi-strength steel with min.550 MPa yield strength, metallic hot dip coated with Aluminium-Zinc alloy (55% aluminium 43.4% zinc 1.6% silicon) with COLORBOND (R) steel quality super durable Item No. 38.34- Pg. No. 291 Basic Rate Add lead of Steel 2.00 Kmt. @ Rs.120.00x 1	1173.00 120.00 1293.00	
Adopted Rate		1293.00	Sqm
17	Providing and fixing of colour coated Zinaluminium(R) AZ150 (min 150 gms/sq.mt. total on each side) profiled sheets for roofing. The feed material is manufactured out of nominal 0.45 mm Base Metal Thickness (BMT) (0.5 mm TCT), Hi-strength steel with min.550 MPa yield strength, metallic hot dip Item No. 38.35- Pg. No. 292 Add lead of Steel 2.00 Kmt. @ Rs.120.00x 1	751.00 120.00 871.00	
Adopted Rate		871.00	Rmt
18	Providing and fixing rolling shutter fabricated from steel laths of minimum thickness 0.9 mm with lock plate of 3.15 mm thickness reinforced with 35 x 35 x 5 mm angle section fitted with sliding bolts and handles for both sides, deep M.S. channel section of depth and thickness not less than 65 mm and 3.15 mm respectively with hold fast arrangements, M.S. Bracket plate 300 x 300 x 3.15 mm minimum size and shape with square bar, suspension shaft of minimum 32 mm diameter, hood cover of M.S. sheet not less than 0.9 mm thickness and of any size at top and safety devices including mechanical gear operation arrangement consisting of worm gear wheels and worms of high grade cast iron or mild steel and one coat of red lead primer etc. complete (I S 62481979) (With mechanical gear) Item No. 39.25- Pg. No. 308	5308.00	
Adopted Rate		5308.00	Sqm

Consultant Engineer

LEAD STATEMENT

As Per S. S.R.22-23

Sr. No.	Nature of Material	Sources	place	Lead in Kms.	Tranportation Charges	Unit
1	Hand broken metal Rubble	Panchgaon	Shahapur	63.00	997.10	Cum
2	C.B. Metal 40 mm	Panchgaon	Shahapur	63.00	1040.45	Cum
3	C.B. Metal 20 mm	Panchgaon	Shahapur	63.00	1040.45	Cum
4	Murum	paladi	Shahapur	14.00	381.35	Cum
5	Sand	roha Sand Ghat	Shahapur	24.00	559.43	Cum
6	Bricks (for 500 No.)	Berodi	Shahapur	18.00	518.56	Cum
7	Steel	Local	Shahapur	2.00	120.00	MT
8	Cement	Local	Shahapur	2.00	6.00	Bag

Consultant Engineer

Quality Control Testing Statement

Sr. No.	Item of Work	Quantity	Unit	Rate of Consumption	Test Details			Rate of Testing	Amount	
					Qty of Material	test Required	Frequency			No. Of tests
1	Providing soling using 80 mm size granite / quartzite / gneiss / trap metal in 15 cm. layer	28.19								
	80mm Metal		Cum	1.00	28.19	Water absorption, Specific Gravity, Impact Value/ crushing Value	1test for 200 cum	1	2600.00	2600.00
	Sand			0.15	4.23	Sieve Analysis, Silt & Clay Content	at the beginning &	1	1380.00	1380.00
2	Providing and laying in situ 1:3:6 cement concrete of trap / granite / quartzite / gneiss metal for foundation and bedding	18.79	Cum							
	Metal			0.94	17.66	Water absorption, Specific Gravity, Impact Value/ crushing Value	1test for 200 cum	1	2600.00	2600.00
	Sand			0.47	8.83	Sieve Analysis, Silt & Clay Content	at the beginning &			
3	Providing and laying in situ /Ready Mix cement concrete M-20 of trap / anite/quartzite/ gneiss metal for R.C.C. work in foundations like raft,	5.40	Cum							
	Metal			0.85	4.59					
	Sand			0.425	2.30					
	Casting Cubes					Compressive test	51 & above - 4sets +1 additional set for each additional 50cum or part thereof	1	690.00	690.00
4	Providing and laying Cast in situ/Ready Mix cement concrete M-20 of trap / granite /quartzite/ gneiss metal for R.C.C. columns as per detailed	4.71	Cum							
	Metal			0.89	4.01					
	Sand			0.425	2.00					
	Casting Cubes					Compressive test	51 & above - 4sets +1 additional set for	1	690.00	690.00

5	Providing and laying Cast in situ/Ready Mix cement concrete M-15 of trap/ granite/quartzite/gneiss metal for coping to plinth or parapet, moulded or chamfered as per drawing or as directed including steel centering, plywood/ steel formwork compacting, roughening them if	17.46	Cum							
	Metal			0.85	14.84					
	Sand			0.425	7.42					
	Casting Cubes					Compressive test	51 & above - 4sets +1	3	690.00	2070.00
6	Providing and laying Cast in situ/Ready Mix cement concrete M-20 of trap / granite / quartzite/ gneiss metal for R.C.C. columns as per detailed designs and drawing or as directed	5.21	Cum							
	Metal			0.85	4.43					
	Sand			0.425	2.21					
	Casting Cubes					Compressive test	51 & above - 4sets +1	1	690.00	690.00
7	Providing and laying Cast in situ/Ready Mix cement concrete M-20 of trap / granite / quartzite/ gneiss metal for R.C.C. beam sand lintels as per detailed designs and drawings or as directed	6.58	Cum							
	Metal			0.85	5.60					
	Sand			0.425	2.80					
	Casting Cubes					Compressive test	51 & above - 4sets +1	2	690.00	1380.00
8	Providing and laying Cast in situ/Ready Mix cement concrete M-20 of trap/ granite / quartzite/ gneiss metal for R.C.C. slabs and landings as per detailed designs and drawings including centering, formwork, cover blocks, laying/rumping	11.63	Cum							
	Metal			0.85	9.89					
	Sand			0.425	4.94					
	Casting Cubes					Compressive test	51 & above - 4sets +1	2	690.00	1380.00

9	Providing second class Burnt Brick masonry with conventional/ I.S. type bricks in cement mortar 1:6 in foundations and plinth of inner walls/ in plinth external walls including bailing out water manually , striking joints on unexposed faces,	40.06	Cum							
	Metal			0.85	34.05					
	Sand			0.425	17.03					
	Bricks					CWater Absorption (Set of 5 Bricks), Compressive Strength(Set of 5 Bricks), Efflorescence (Set of 5 Bricks).		1	2175.00	2175.00
10	Providing and cutting, bending, hooking, laying, in position and tying bar reinforcement TMT/ H Y S D steel bars	3.47	MT							
	RCC bars			1	3.47	Elongation ,tensile Strength % , Yield Stress , Weight per Meter	One Test for every 5.00mt or for each diameter	1	1275.00	1275.00
11	Cement					Fineness, Com. Strength, Initial & Final setting Time Specific Gravity , Soundness	One test for each Consignment of 50MT (1000 bag)	1	3770.00	3770.00
									Total Rs.	20700.00

Consultant Engineer

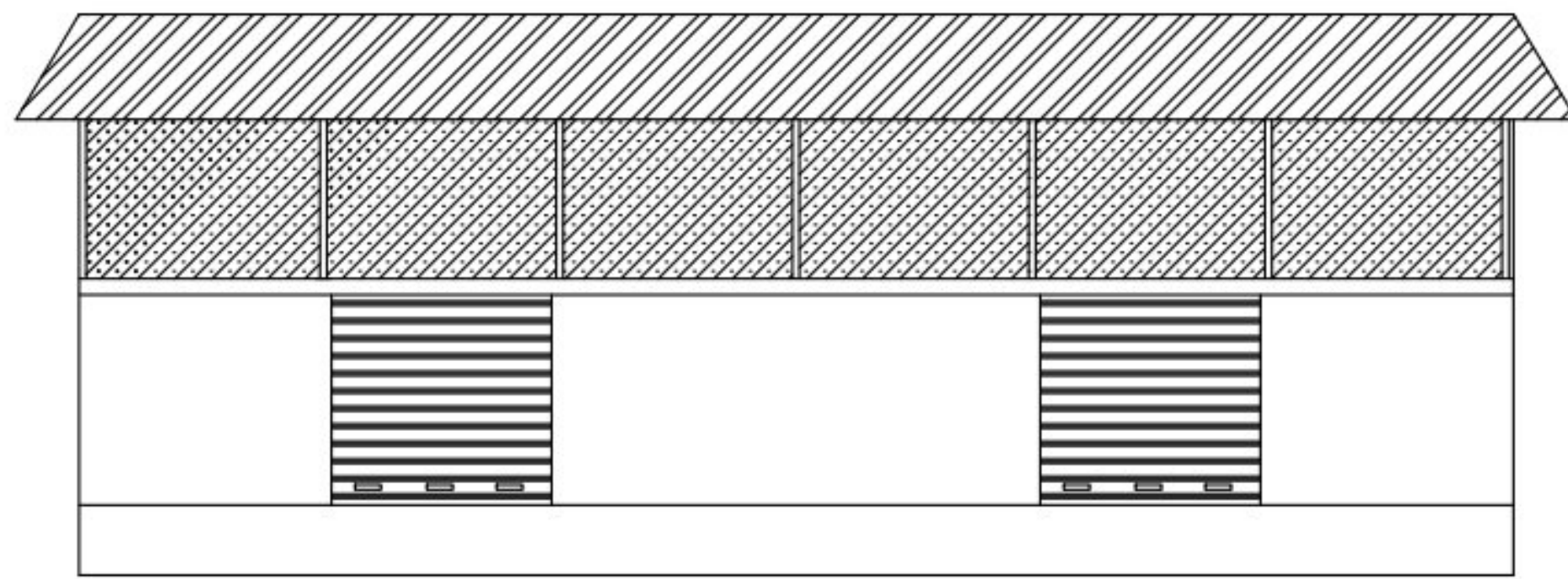
ROYALTY STATEMENT

Sr. No.	Name of Work	Quanty	Material	Rate of Consumption	Metal	Sand	Murum / soil
1	Providing soling using 80 mm size trap metal in 15 cm. layer including filling voids with Crushed sand/grit, ramming, watering etc. complete	28.19	Boulder Sand	1.00 0.15	28.19	4.23	
2	Providing and laying in situ, cement concrete in M-10 of trap/ granite/ quartzite/ gneiss metal for foundation and bedding including bailing out	18.79	Metal Sand	0.89 0.44		8.27	
3	Providing and laying in situ cement concrete M-20 of trap / granite /quartzite/ gneiss metal for R.C.C. work in foundations like raft s	5.40	Metal Sand	0.85 0.425		2.30	
4	Providing and laying Cast in situ/Ready Mix cement concrete M-15 of trap/ granite/quartzite/gneiss metal for coping to plinth or parapet	17.46	Metal Sand	0.85 0.425		7.42	
5	Providing and laying Cast in situ/Ready Mix cement concrete M-20 of trap / granite /quartzite/ gneiss metal for R.C.C. columns	5.21	Metal Sand	0.85 0.425		2.21	
6	Providing and laying Cast in situ/Ready Mix cement concrete M-20 of trap / granite /quartzite/ gneiss metal for R.C.C. beams and lintels as per detailed designs and	6.58	Metal Sand	0.85 0.425		2.80	
7	Providing and laying Cast in situ/Ready Mix cement concrete M-20 of trap/ granite / quartzite/ gneiss metal for R.C.C. slabs and landings as per detailed designs and	11.63	Metal Sand	0.89 0.44		4.94	
8	Providing second class Burnt Brick masonry with conventional/ I.S. type bricks in cement mortar 1:6 in foundations and plinth of inner walls/ in	7.45	Sand	0.32		2.38	
9	Providing Second class Burnt Brick masonry with conventional/ I.S. type bricks in cement mortar 1:6 in superstructure	32.61	Sand	0.32		10.44	
10	Providing internal cement plaster 20mm thick in single coat in cement mortar 1:4 without neeru	478.86	Sand	0.015		7.18	

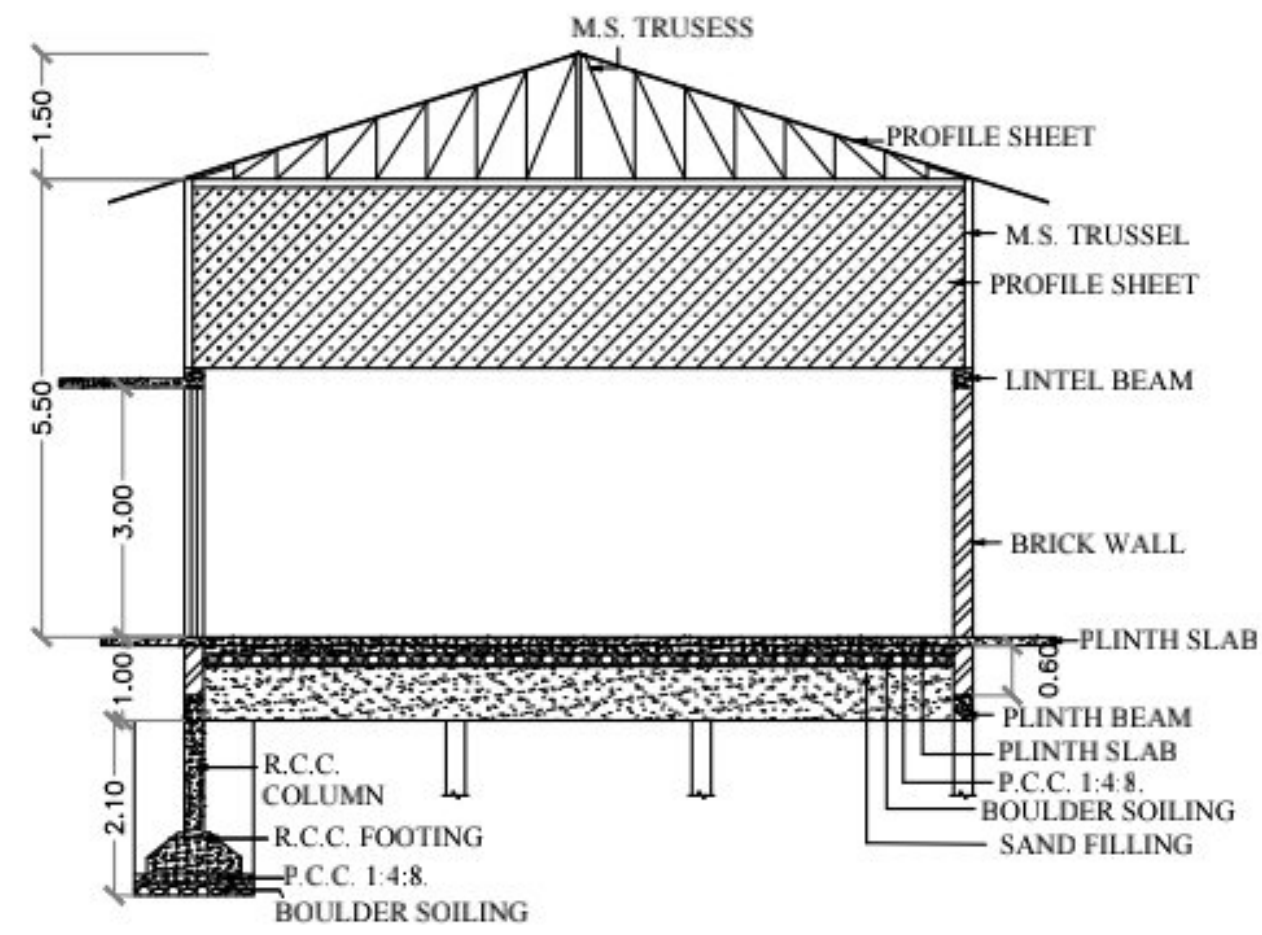
28.19 52.1705

Murum & metal	28.19 Cum @	216.18	6093.68184
Sand	52.17 Cum @	237.37	12383.70635
		<u>Total</u>	<u>18477.0</u>

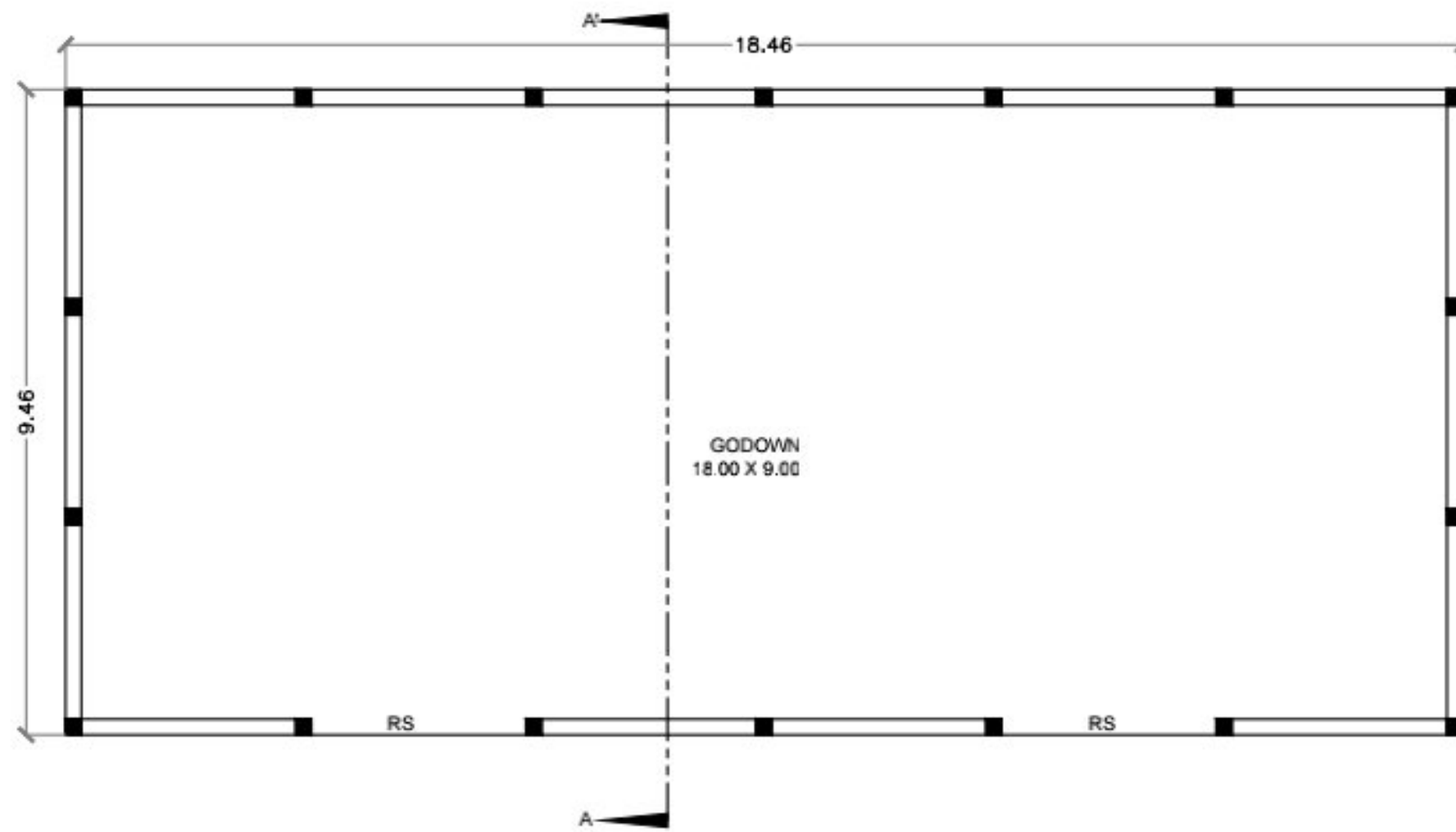
Consultant Engineer



ELEVATION



SECTION A-A'



PROPOSED G.F. PLAN
SCALE :- 1:100

PLAN SHOWING PROPOSED CONSTRUCTION OF INTIGRATED PACKHOUSE IN PREMICES OF BTB KISSAN PRODUCER COMPANY LTD. BHANDARA AT SHAHAPUR , TAH & DIST. :- BHANDARA.

SCHEDULE FOR OPENING

Sr.No.	Type	SIZE	DESCRIPTION
1.	RS	3.14 X 3.00	ROLLING SHUTTER

SANCTIONING AUTHORITY

OWNER

ARCH. / ENGINEER



ALL DIMENSIONS ARE IN METERS.